


# COVID-19 Response at Tukwila- Fall 2021

By: Nicole DeBoer and Hannah Maestro



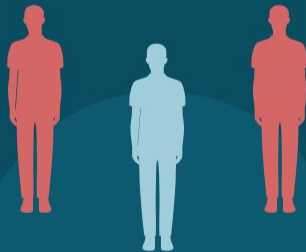
# What do I do as a District Nurse?

- 
- Contact trace as soon as I am informed of case, exposure, or symptomatic student.
  - Notify students, family, and staff of exposure to positive case.
  - Test students.
  - Additional screening of students.
  - Check in with students and families with known cases.
  - Attend state and county wide meetings regarding school COVID-19 protocols.
  - Report cases and close contacts to King County DOH.
  - Refer eligible students and staff to vaccine locator.
  - And much much more!



Original virus  
in Wuhan

2.4-2.6



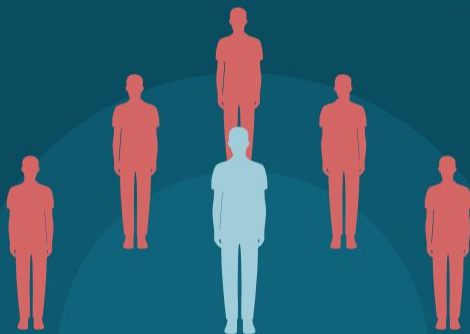
The version that caused  
Europe's first wave

3



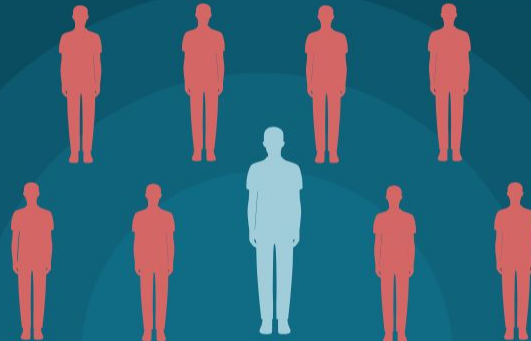
Alpha

4-5



Delta

5-8





# Fall 2021 Updates

## FACE COVERINGS

- Masks are required to be worn by students and staff both indoors and outdoors, regardless of vaccination status.

## SOCIAL DISTANCING

- Students should maintain a distance of **3 feet or more**, and staff members **6 feet or more**.
- Maximize distance in common areas, such as hallways and lunchrooms

## SCREENING/ATTESTATIONS

- No longer being performed within schools
- Students should be encouraged to report any symptoms to staff members, and parents encouraged to do an symptom screening of their own before leaving home.

## VACCINATIONS

- According to Gov. Jay Inslee: “K -12 educators, school staff, coaches, bus drivers, school volunteers and others working in school facilities will have until October 18 to be fully vaccinated as a condition of employment”
- Students will not be required to receive COVID vaccines.



# What Happens if a Student Becomes Sick at School?

## Step 1: Isolate

- The student is taken to the school's isolation room.
- The health team member should don their PPE prior to entering the room, and remain with the student.

## Step 2: Notify

- The health team member present will instruct a staff member to notify the student's guardian and request that they bring the student home.

## Step 3: Assess

- Document student's demographics, symptoms, medical history, and exposure risks.
- Identify close contacts

## Step 4: Clean

- Notify custodians of potential positive case. The isolation room and classroom should remain closed for 24 hours before a deep cleaning takes place.

## Step 5: Contact Tracing

- Once student is sent home, begin contact tracing protocol.



# Contact Tracing Steps and Process

## Steps:

1. Initial notification of person under investigation (PUI) or “index case.”
2. Interview the PUI and provide guidance on isolation.
  - Determines close contacts, last date at school, symptoms, etc.
3. Locate and notify contacts who may have been exposed.
  - This includes staff AND students.
4. Inform close contacts and advise them to begin quarantine.
5. Monitor close contacts.
  - Follow up and monitor test status (if positive, go back to step 1)

Source: “Making Contact: A Training for COVID-19 Contact Tracers”



# Notification Process

## Included in notification:

- Close contacts are notified **as soon as possible** with quarantine and testing guidance.
- Transportation ( if applies to the student).
- Custodial is notified of students location(s) on campus for appropriate sanitization procedures.
- Teachers are notified to excuse absences.
- Staff wide email notification of campus exposure.

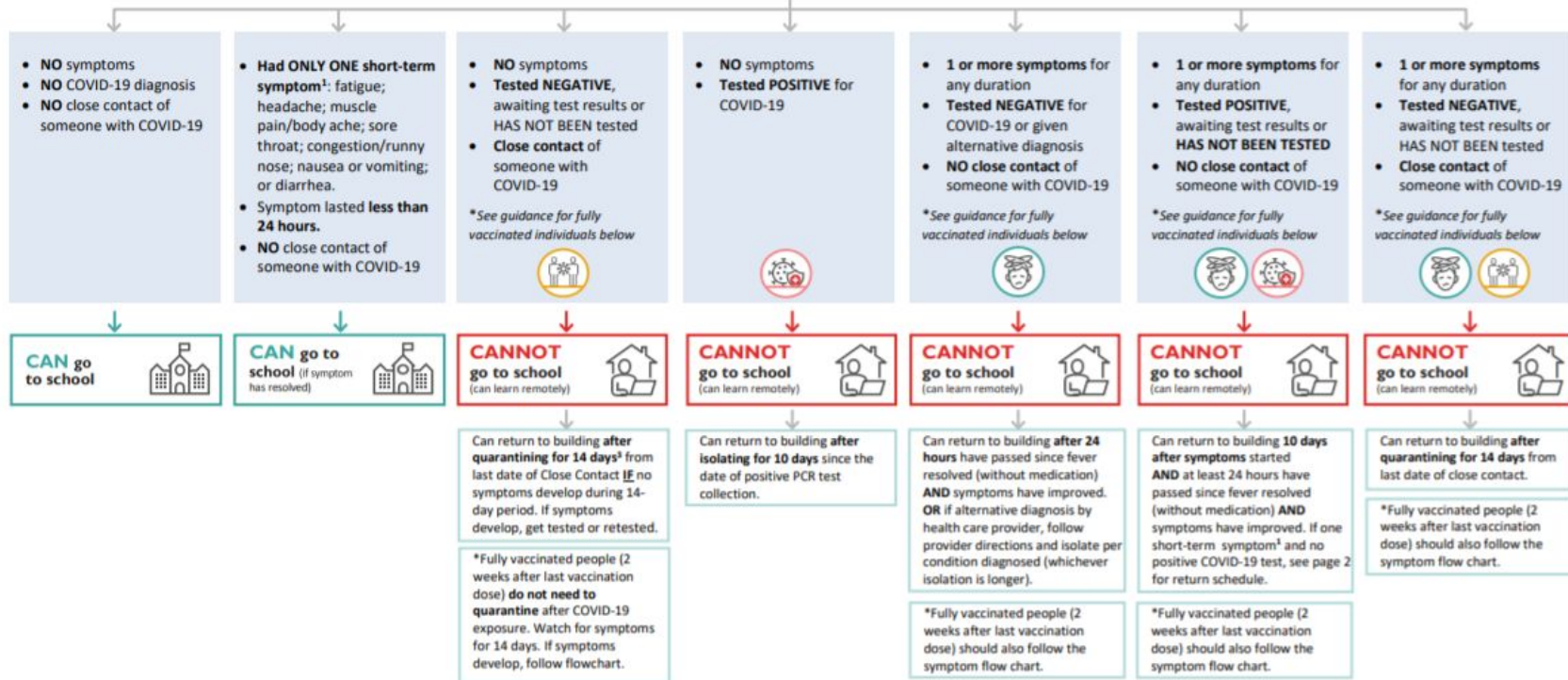
## Not included in notification:

- Confidential student information including but not limited to:
- Name
- Family Information
- It is at the students discretion to tell teachers and others that they have COVID.
- We CANNOT tell teachers and staff students medical information.

# COVID-19 Return to Work/School Flow Chart



## SCREEN STAFF OR STUDENT FOR COVID-19





# What are “close contacts”?



## CLOSE CONTACT DEFINITION<sup>3</sup>

“Close Contact” includes anyone in one or more of the following categories:

- Been within 6 feet (2 meters) of a person with COVID-19 for a combined total of 15 minutes or more within a 24-hour period
- Live in the same household as a person with COVID-19
- Cared for a person with COVID-19
- Been in direct contact with saliva or other body secretions from a person with COVID-19 (for example: been coughed on, kissed, shared utensils, etc.)

Public Health will help identify close contacts.

**If you’ve been exposed to someone with COVID-19 and you have no symptoms, Public Health recommends the following:**

1. Stay in quarantine for 14 days after your last contact. **This is the safest option.**
2. If this is not possible, stay in quarantine for 10 days after your last contact, without additional testing.
3. If the first two options are not possible, stay in quarantine for 7 full days beginning after your last contact ***and*** if you receive a negative test result (get tested no sooner than day 5 after your last contact). *This option depends on availability of testing resources and may not be recommended in some settings.*

\*Fully vaccinated people (2 weeks after last vaccination dose) with no symptoms **do not need to quarantine** after COVID-19 exposure. Watch for symptoms for 14 days. If symptoms develop, follow flowchart.

# What if I am Vaccinated?



- Fully vaccinated: Two weeks post second dose of Moderna or Pfizer Vaccine, or single dose of J&J vaccine.
- Currently no post-vaccination time limit on fully vaccinated status.
- Previous time limit was 3 months post-vaccination, however people who are 90+ days post show vaccines are still proving to be effective, so this statement was retracted by the CDC.
- **If you have been fully vaccinated and are exposed to COVID - you are no longer required to quarantine OR get tested so long as you are NOT symptomatic.**
- If you travel domestically, you do not need to get tested before or after, or self-quarantine after your trip unless symptomatic.
- If symptomatic, initiate quarantine and get tested as soon as possible.
- District requirements still include wearing a mask and practicing social distancing.
- Click [here](#) for additional information and guidance from CDC.



## Have Questions?

- Email us! [covid@tukwila.wednet.edu](mailto:covid@tukwila.wednet.edu)
- Reference the [King County Schools COVID-19 response toolkit](#)

Visit some of these other helpful resources:

- [COVID-19 Clinical Questions and Answers \(CDC\)](#)
- [King County Schools and Child Care Guidance](#)
- [CDC Contact Tracing Guidelines](#)
- [Scientific Brief on COVID Transmission \(CDC\)](#)
- [COVID-19 Data Dashboard for King County](#)